



International RS Tera Class Association

World Championships 2017, Carnac, France

Competition – 31st July – 4th August 2017

SAILING INSTRUCTIONS

ORGANISING AUTHORITY
Yacht Club Carnac

[DP] denotes a rule for which the penalty is at the discretion of the protest committee.

[NP] denotes that a breach of this rule will not be grounds for a protest by a boat.

[SP] denotes a rule for which a standard penalty may be applied by the race committee without a hearing.

1. RULES

- 1.1 The regatta will be governed by the rules as defined in The Racing Rules of Sailing 2017 – 2020.
- 1.2 No national authority prescriptions will apply.
- 1.3 International RS Tera Class Rules will apply.
- 1.4 [DP] In addition to the safety regulations in the class rules, the sailing instructions will include a tally system which must be complied with. All sailors must wear a whistle attached to their buoyancy aids. All boats shall carry a painter of at least 8m in length permanently attached to the standard fitment position in front of the mast. 8m indicates the length from the foremost part of the bow to the end of the painter.
- 1.5 If there is a conflict between languages the English text will take precedence.



2. NOTICES TO COMPETITORS

Notices to competitors will be posted on the official notice board located in the tent.

3. CHANGES TO SAILING INSTRUCTIONS

Any change to the sailing instructions will be posted before 11:00h on the day that they will take effect, except that changes to the schedule of races will be posted before 20:00h on the day before it will take effect.

4. SIGNALS MADE ASHORE

- 4.1 Signals made ashore will be displayed on the flagpole located on the west side of Carnac harbour entrance.
- 4.2 When flag AP  is displayed ashore, '1 minute' is replaced with 'no less than 45 minutes' the first warning signal will be made.
- 4.3 [DP][NP] Boats shall not leave the slipway until flag D  is displayed.
- 4.4 [DP][NP] Competitors shall wear personal buoyancy at all times afloat, except briefly while adjusting clothing or personal equipment. Flag Y will not be displayed. This changes RRS 40.

5. REGISTRATION & EQUIPMENT INSPECTIONS



- 5.1 [DP][NP] Competitors shall complete all registration and equipment inspection requirements before racing.
- 5.2 Information on equipment inspections will be posted on the official notice board. Boats shall be presented with all equipment that will be used in the championship. The bottom mast, boom, and all control lines shall be rigged and the sail and top mast shall be de-rigged and ready for the inspection.
- 5.3 Equipment inspections will take place at the following times:
30th July 09:30 to 13:00 and 14:00 to 17:00 - Registration & measurement
31st July 09:30 to 12:00 - Final registration & measurement.
- 5.4 Equipment inspections may be made throughout the regatta at the discretion of the class technical representative, the race committee or the international jury.

6. [DP][NP] BOATS AND EQUIPMENT

- 6.1 Each competitor shall use only one hull, sail, mast, boom, centreboard and rudder, which shall be identified during the initial equipment inspection.
- 6.2 In the event of damage, boats and equipment may only be substituted with the written permission of the class technical representative. If the damage occurs later than 90 minutes before the first scheduled start on a racing day, and before the start of the last race of the day, provisional oral permission shall be obtained from the class technical representative, the jury or the race committee, and the written permission of the class technical representative, the jury or the race committee shall be applied for before the end of the protest time at the end of the day in which the substitution takes place.

7. SCHEDULE

Date	Time	Event
Monday, 31 st July	11:00 13:00	Supporters & Competitors Briefing First Warning Signal
Tuesday, 1 st August	11:00 13:00	Briefing First Warning Signal
Wednesday, 2 nd August	11:00 13:00	Briefing First Warning Signal
Thursday, 3 rd August	11:00 13:00	Briefing First Warning Signal
Friday, 4 th August	11:00 13:00 Dependent on Race Finish	Briefing First Warning Signal Prize Giving & Closing Ceremony

The Championship will consist of a maximum of **16** races. The intention is that there will be no more than 4 races each day. However, additional races may be sailed either in advance or arrears in order to complete the program if weather or other reasons dictate.

It is likely that all races during a day will be sailed without time to go ashore in between races

The final day of racing will be 4th August 2017 and any number of races may be sailed. No warning signal will be made after 16:00 on 4th August 2017 except as a consequence of a General Recall.

In the event that any one fleet reaches an entry of 80 boats or more, then at the discretion of the Race Management team, flights may be used to split the fleet into manageable numbers, In that case Addendum K applies.



8. CLASS FLAGS AND STARTING SEQUENCE

Class	Starting sequence	Class Flag	
RS Tera PRO fleet	1	PRO flag	If necessary FLIGHT Flags will be displayed in combination with the Fleet flag, see Attachment K
RS Tera SPORT fleet	2	SPORT flag	If necessary FLIGHT Flags will be displayed in combination with the Fleet flag, see Attachment K

9. RACING AREAS

Attachment A.2 shows the approximate location of the Racing Area.

10. COURSES

- 10.1 The diagrams in Attachment A.1 show the courses, including the approximate angles between legs, the order in which marks are to be passed, and the side on which each mark is to be left.
- 10.2 No later than the warning signal, the race committee signal boat will display the approximate compass bearing of the first leg.
- 10.3 No later than the warning signal, the race committee signal boat will display course and number of laps for each fleet:
OUTER Course = O followed by number of laps- 1, 2, 3
INNER Course = I followed by number of laps- 1, 2, 3

11. MARKS

- 11.1 Mark 1 will be a red tetra buoy, mark 2 will be a yellow tetra buoys, marks 3s/3p will be white cylindrical FFVoile buoys and marks 4s/4p will be white cylindrical buoys.
- 11.2 Starting marks are a race committee signal boat and a (second Committee boat with an orange flag), the finishing marks are a race committee signal boat and a cylindrical yellow buoy.

12. THE START

- 12.1 Races will be started by using RRS 26. (5, 4, 1, go).
- 12.2 An orange attention signal will be displayed at least 5 (five) minutes before the 1ST warning signal for the first class of a starting sequence (10 minutes before the starting signal of signal first class).
- 12.3 The starting line will be between a staff displaying an orange flag on the race committee signal boat at the starboard- end and the orange flag on the pin end mark boat.
- 12.4 [DP][NP] Boats whose warning signal has not been made shall avoid the starting area during the starting sequence for other races.
- 12.5 [SP] A boat starting later than 4 minutes after her starting signal will be scored DNS (Did Not Start) without a hearing. This changes RRS A4 and A5.

13. CHANGE OF THE NEXT LEG OF THE COURSE

- 13.1 To change the next leg of the course, the race committee will lay a new mark (or the finishing line) and remove the original mark as soon as practicable. When in a subsequent change a new mark is replaced, it will be replaced by an original mark.
- 13.2 Except at a gate, boats shall pass between the race committee boat signalling the change of the next leg and the nearby mark, leaving the mark to port and the race committee boat to starboard. This changes rule 28.

14. SHORTENING COURSE

According to RRS 32.2, if the course is shortened for one fleet only, the fleet flag with S flown to indicate which fleet flag S refers to. If flag S is flown without any fleet flag, the course is shortened for all fleets.



15. TIME LIMITS

- 15.1 The target time for the first boat to finish is 50 minutes.



- 15.2 The time limit to finish is 20 minutes after the first boat to sail the course and finished.
15.3 Failure to meet the target time will not be grounds for redress. This changes rule 62.1(a)

16. THE FINISH

- 16.1 The finishing line will be between a staff or mast displaying an orange flag on the race committee signal boat and the course side of finishing mark (yellow cylindrical buoy)

17. PENALTY SYSTEM

RRS Appendix P will apply except that every penalty is a Two-Turns Penalty. RRS P2 is changed by deleting P2.2 and P2.3, and by having RRS P2.1 apply to all penalties.

18. PROTESTS AND REQUESTS FOR REDRESS

- 18.1 **RRS Appendix T: Arbitration.** A system for exoneration penalties, advisory hearings and arbitrations will be available. The exoneration penalty will be 30% of the number of boats (rounding 0.5 upwards) entered in the relevant fleet.
- 18.2 Protest forms are available at the regatta office (YC Carnac reception desk – First floor). Protests and requests for redress or reopening shall be delivered there within the appropriate time limit. Hearing room is located first floor YCCarnac building.
- 18.3 For each class, the protest time limit is 60 minutes after the last boat has finished the last race of the day within the 20 minute time limit, or 60 minutes after the 20 minute time limit, or the race committee signals no more racing today, whichever is the later.
- 18.4 Notices will be posted no later than 20 minutes after the protest time limit to inform competitors of hearings in which they are parties or named as witnesses.
- 18.5 Notices of protests by the race committee, technical committee or protest committee will be posted to inform boats under RRS 61.1(b).
- 18.6 Breaches of instructions 4.3, 4.4, 5.1, 6, 12.4, 20, 21, 22 and 23 will not be grounds for protests by a boat. This changes RRS 60.1(a). Penalties for these breaches (and for breaches of class rules) may be less than DSQ (disqualification) if the jury so decide [DPI].
- 18.7 On the last scheduled day of racing, a request for redress based on a protest committee decision shall be delivered no later than 20 minutes after the decision was posted. This changes RRS 62.2.
- 18.8 A list of boats that have been penalised by the jury for breaking RRS 42 will be posted on the official notice board.

19. SCORING

- The Low Point System of Appendix A will apply
- 19.1 4 races shall be completed to constitute a series.
- 19.2 A boat's score shall be calculated in accordance with RRS A2, except:
- (a) When 4 races have been completed, a boat's series score will be the total of her race scores.
 - (b) When from 5 to 8 races have been completed, a boat's series score will be the total of her race scores except her worst score.
 - (c) When 9 or more races have been completed, a boat's series score will be the total of her race scores except her worst 2 scores.
- 19.3 - (a) Points for the PRO fleet and the SPORT fleets shall be calculated separately.
- (b) Points for the World Championships (PRO and SPORT) shall be calculated including all competitors in the relevant fleet.
- 19.4 Scoring after time limit.
Boats failing to finish within 20 minutes after the first boat sails the course and finishes will all be scored the same number of points, one point more than the last boat to finish within the time limit, without a hearing. This changes RRS 35, A4 and A5.



20. [DP][NP] SAFETY REGULATIONS

- 20.1 Check out and check in the system will be in place. The appropriate table will be situated in the tent on the dinghy park close to the official notice boards. The helm for each boat shall sign before launching and again after coming back ashore to inform the race committee that the boat is safely ashore.
- The time limit for check out
 - Open 90 minutes before the first warning signal scheduled of the day.
 - Closed at the first starting signal of relevant class.
 - The check in time limit is the protest time on the day in question.
- 20.2 Any competitor not complying with check out /in procedures and finished of his/her race(s), will have the following penalty applied without a hearing: This changes rule 63.1.
- Failure to check out: + 1pt added to the score of the first race of the day
 - Failure to check in: + 1pt added to the score of the last race of the day
 - Failure to check out and in: + 1pt added to the score of all races of the day
- The scoring abbreviation SCP (scoring penalty) will be used.
- 20.3 A list of boats that have infringed this rule will be posted on the official notice board as soon as possible after the end of protest time.

21. [DP][NP] SUPPORT BOATS

- 21.1 Except when participating in rescue operations, team leaders, coaches, parents and other support personnel, shall stay outside areas where boats are racing from the time of the preparatory signal for the first class to start until all boats have finished or retired or the race committee signals a postponement, general recall or abandonment for **all fleets**.
- 21.2 Kill cords shall be worn whilst engines are running, the course safety officer will be looking out for compliance on this issue, there are no excuses and boats may be requested to leave the race area immediately if kill cords are not being used appropriately.
- 21.3 All coaches will have a VHF radio with, at least, channels 8,9,16, 68, 69, 71 and 72, operative while afloat.
- 21.4 If a support boat does not comply with the instructions above, the jury may impose a discretionary penalty after a hearing to some or all associated competitors and may include further restrictions on the movement of their support boat. This changes RRS A5.

22. [DP][NP] TRASH DISPOSAL

Trash may be placed aboard support and race committee boats. A penalty for breaking RRS 55 may be less than disqualification if the protest committee so decides. This changes RRS 64.

23. [DP][SP] RADIO COMMUNICATION / RECORDING EQUIPMENT

Except in an emergency, a boat shall neither make radio transmissions while racing nor receive radio communications not available to all boats. This restriction also applies to mobile telephones.

Boats may carry fixed video recording equipment attached to any part of the boat, provided that this equipment is not remotely controlled

24. PRIZES

RS Tera Pro as a minimum dependent on number of entries
1st-6th Overall + 1st to 3rd in Silver Fleet if entry numbers dictate
1st-3rd Ladies

RS Tera Sport as a minimum dependent on number of entries
1st-6th Overall + 1st to 3rd in Silver Fleet if entry numbers dictate
1st-3rd Ladies

Titles will be awarded as follows:

RS Tera Pro World Champion: 1st RS Tera Pro Overall



RS Tera Sport World Champion: 1st RS Tera Sport Overall

25. INSURANCE

Each participating boat shall be insured with valid third-party liability insurance with a minimum cover of €2,000,000 per event or the equivalent

26. DISCLAIMER OF LIABILITY

Competitors participate in the regatta entirely at their own risk. See RRS 4, Decision to Race. The organizing authority will not accept any liability for material damage or personal injury or death sustained in conjunction with or prior to, during, or after the regatta.

27. RIGHTS TO USE NAME AND LIKENESS

In entering and participating in this event each competitor grants to the organising authority, the Class Association and the sponsors of the event, the absolute right, authority and permission in perpetuity, to make, use, distribute, broadcast, edit, re-format, publish and show, from time to time and at their discretion, in any media any motion pictures, still pictures, audio, and live, taped or film, text, television and other reproductions of him/her, their boat, and his/her interviews made at the venue or on the water from the time of their arrival at the venue, until their final departure (and to identify their name) , for all purposes without compensation.

28. ORGANISATION

The race officer is: John Coveney IRO FRA

The chairman of the Jury is: Bernadette Delbart IJ FRA



ATTACHMENT A.1 – THE COURSES

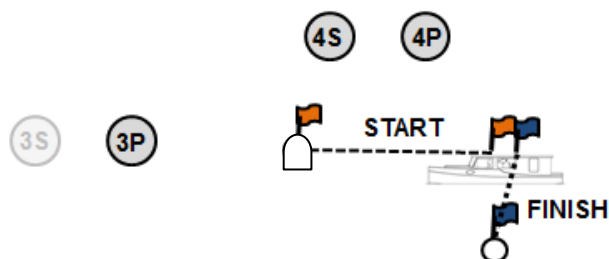
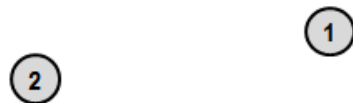
Outer Loop - O

1 LAP	START	1	2	3P	FINISH				
2 LAPS	START	1	2	3S / 3P	2	3P	FINISH		
3 LAPS	START	1	2	3S / 3P	2	3S / 3P	2	3P	FINISH



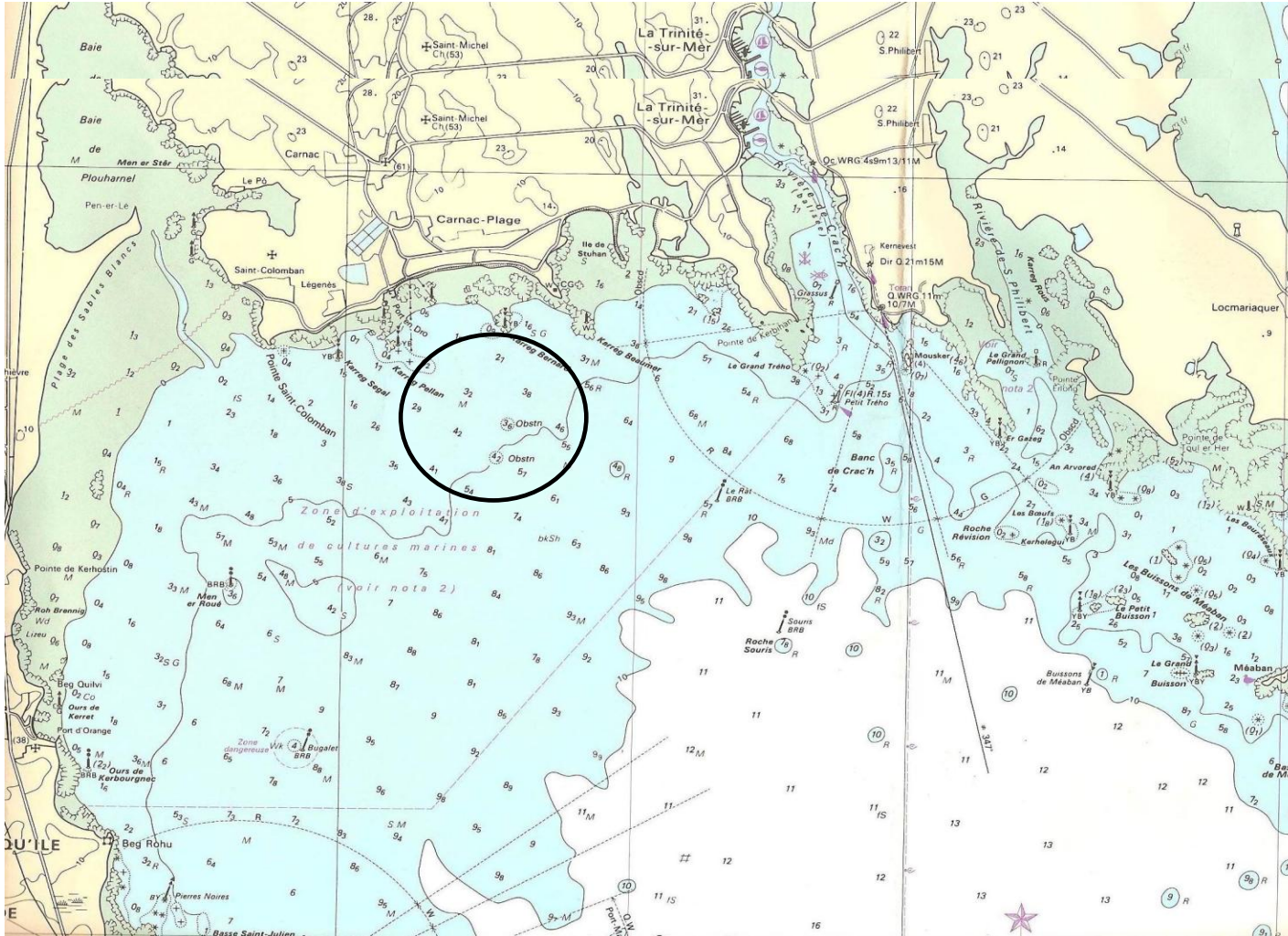
Inner Loop - I

1 LAP	START	1	2	3P	FINISH				
2 LAPS	START	1	4S / 4P	1	2	3P	FINISH		
3 LAPS	START	1	4S / 4P	1	4S / 4P	1	2	3P	FINISH





ATTACHMENT A.2 The course area





Attachment K

Flights

Division of fleet, if applicable

Applicability

The race committee will decide if a fleet is to be divided into two, depending upon the numbers entering, the sailing conditions and the feasibility of race management to make the split. A *rough* guide to number of entries that might cause this SI to be invoked is 80 entrants (Preference is for a single fleet)

Allocation into flights

First day's sailing

The race committee will allocate each boat into one of four groups yellow, blue, red & green.

All competitors who pre-enter will be allocated colours, group colours will be allocated in order to obtain as fair a grouping as possible and to achieve roughly equal numbers in each.

Second day's sailing

The race committee will allocate each boat into one of four groups yellow, blue, red & green. Yellow Group will include post first day ranking positions 1, 8, 9 & 16, Blue 2, 7, 10 & 15, Red 3, 6, 11 & 14 and Green 4, 5, 12 & 13 and so on.

1	Yellow	2	Blue	3	Red	4	Green
8	Yellow	7	Blue	6	Red	5	Green
9	Yellow	10	Blue	11	Red	12	Green
16	Yellow	15	Blue	14	Red	13	Green
17	Yellow	18	Blue	19	Red	20	Green
24	Yellow	23	Blue	22	Red	21	Green
25	Yellow	26	Blue	27	Red	28	Green
32	Yellow	31	Blue	30	Red	29	Green
33	Yellow	34	Blue	35	Red	36	Green
40	Yellow	39	Blue	38	Red	37	Green
41	Yellow	42	Blue	43	Red	44	Green
48	Yellow	47	Blue	46	Red	45	Green
49	Yellow	50	Blue	51	Red	52	Green
56	Yellow	55	Blue	54	Red	53	Green
57	Yellow	58	Blue	59	Red	60	Green
64	Yellow	63	Blue	62	Red	61	Green
65	Yellow	66	Blue	67	Red	68	Green
72	Yellow	71	Blue	70	Red	69	Green
73	Yellow	74	Blue	75	Red	76	Green
80	Yellow	79	Blue	78	Red	77	Green
81	Yellow	82	Blue	83	Red	84	Green
88	Yellow	87	Blue	86	Red	85	Green
89	Yellow	90	Blue	91	Red	92	Green
96	Yellow	95	Blue	94	Red	93	Green
97	Yellow	98	Blue	99	Red	100	Green



Each boat in each group shall display the appropriate coloured ribbon at the top of the mast yellow, blue, red, or green as instructed at registration.

Coloured ribbons will be available in the race office before racing and it is up to each competitor to make sure he/she takes the correct colour.

Group and Fleet signals

When the fleet is split into four groups, the warning signals will be yellow, blue, red & green

When the fleet is split into two fleets, after the 2 day qualifying series the warning signals will be, Yellow for Gold Fleet and Blue for Silver Fleet

Starts:

Flight starts Race Number	1st Start/flight	2nd Start/flight
1	Yellow & Blue	Red & Green
2	Yellow & Red	Blue & Green
3	Yellow & Green	Blue & Red
4	Yellow & Blue	Red & Green
5	Yellow & Red	Blue & Green
6	Yellow & Green	Blue & Red

Post qualification starts will run Yellow for Gold Fleet then Blue for Silver Fleet

1. As long as three qualifying races are completed, the assignment to Gold- and Silver fleet will be posted on -the date stated in the Sailing Instructions- at 2100. If at that time only two or less qualifying races are completed, the races on the next day are also qualifying races until three races are completed.

2. If after three racing days only two qualifying races are completed, the assignment to the Gold and Silver fleet will be made after the third day on the basis of two qualifying races.

If after three days of racing only one qualifying race is completed, the qualifying series will be extended until two valid races are completed.

3. Scores in the qualifying series are carried forward to the final series.