



# International RS Tera Class Association

## World Championships 2017

### Carnac, France

Competition - 31 July to 4 August 2017  
Registration & Measurement - 29 July to 31 July 2017

## NOTICE OF RACE

ORGANISING AUTHORITY  
Yacht Club Carnac

### 1. RULES

- 1.1 The regatta will be governed by the rules as defined in The Racing rules of sailing.
- 1.2 No national prescriptions will apply.
- 1.3 International RS Tera Class Rules will apply.
- 1.4 In addition to the safety regulations in the class rules, the sailing instructions will include a tally system that must be complied with. All sailors must wear a whistle attached to their buoyancy aids. All boats shall carry a painter of at least 8m in length permanently attached to the standard fitment position in front of the mast.
- 1.5 Other than the matters included in this notice of race, no racing rule changes requiring advance preparation will apply. Racing rule changes will appear in full in the sailing instructions.
- 1.6 If there is a conflict between languages the English text will take precedence.



## 2. ADVERTISING

Advertising is permitted in accordance with the class rules and World Sailing Regulation 20. Boats will be required to display advertising chosen and/or supplied by the International RS Tera Class Association and the Organizing Authority (OA).

The following parts of the hulls and sails must be left clear without exception for the possible display of supplied advertising:

- (i) The front 1m of the bow
- (ii) The bottom 10% of the mainsail
- (iii) The front 50cm of the boom nearest the mast

## 3. ELIGIBILITY AND ENTRY

3.1 The regatta is open to all boats of the RS Tera Class.

All competitors must be a member of the International RS Tera Class Association (IRSTCA).

Membership fees of 10 Euros per sailor will be collected at the time of registration and will complete the registration process.

Eligible boats may enter by:

- (a) Completing the on-line entry form at <http://www.rstera.org>
- (b) making the required entry fee payment and, at registration
- (c) **All competitors must supply a completed Medical Information declaration** (for all competitors) and a completed Parent's / Guardian consent form signed by the responsible parent or guardian. Forms will be available to download on-line at <http://www.rstera.org>

These forms need to be preprinted, completed and brought to registration by all entrants.



All competitors must hold insurance valid in France, reflecting a minimum of 2,000,000 Euros (or other currency equivalent) public liability insurance, and sign at registration that this cover is in place.

**All competitors must also show original insurance certificates during registration.**

3.2 For all competitors / nationalities the following age rules apply:

RS Tera Pro aged 18 or under, but not younger than 12, on 31 July 2017

RS Tera Sport aged 15 or under on 31 July 2017

3.3 **Entry Fee:**

An entry fee is payable at the time of entering as follows:

- **£215/240 Euros** if entry and payment is received on or before Midnight 30 April 2017
- **£245/275 Euros** if entry and payment is received after Midnight on 30 April 2017

Entries must be made by Midnight on 9 July 2017, or such later date as the OA may decide. Entry after this or such later date will be accepted at the sole discretion of the OA and will be subject to an additional late entry charge of 25 Euros.

Entries will only be confirmed once the entry fee has been paid in full. Where the entry fee remains unpaid beyond a deadline, then that entry will be removed from the entry list.

No liability will be accepted for unapproved late entrants or for any costs arising relating to entries other than as set out below.

All promotions from any waiting list to confirmed entries will depend on payment of entry fees, appropriate to those in force at the time of payment, and on available space at the sole discretion of the OA.

In the event of any request for refund of entry fees, the OA undertakes as follows:

- (i) Any request for refund of paid entry received before Midnight on 30 April 2017 will be refunded in full less an administration fee of 25 Euros



- (ii) Any request for refund of paid entry received after Midnight on 30 April 2017 but before Midnight on 9 July 2017 will be refunded at 50%
- (iii) Any request for refund of paid entry received after Midnight on 9 July 2017 will not be eligible for a refund

In the unlikely event the OA deems it necessary to cancel the event due to insufficient entries, such decision shall be taken no later than Midnight on 9 July 2017 and all entrants shall be notified promptly thereafter. In such event, the OA (or, on its behalf, the IRSTCA) undertakes to refund entry fees received (in the currency paid) in full less, if any, bank transaction fees. Neither the OA nor the IRSTCA shall have any further liability to entrants for direct or indirect costs relating to or arising from cancellation of the event.

The IRSTCA will manage the entry process on behalf of the OA. Account details for payment of the entry fee upon will be provided upon entry on-line.

#### 3.4 Included in Entry Fee (provisional - subject to addition):

- A 'competitor's entry bag'
- A national flag to be applied to mainsail according to instructions provided
- 1 x BBQ meal ticket
- A hot meal is also provided to all entrants at the end of each day's racing.



#### 4. SCHEDULE

Schedule as follows:

Date	Time	Event
Friday 28 <sup>th</sup> & Saturday July 29 <sup>th</sup> ,		<b>Boats can be dropped off at club (see attachment A for where to leave boats) Trailers to be moved off site (see Attachment C)</b>
Sunday, 30 July	09:00 09:30 – 12:00 14:00 – 17:00 13:00 18:00	<b>Charter boats available for collection</b> Race Office opens } Registration & measurement Warning signal for practice race Opening ceremony and welcome drink
Monday, 31 July	09:00 09:30 – 11:00 11:00 13:00	Race Office opens Final registration & measurement Supporters & Competitors Briefing Warning signal for Championship races
Tuesday, 1 August	09:00 11:00 13:00	Race Office opens Daily briefing Warning signal for Championship races
Wednesday,	09:00	Race Office opens



2 August	11:00 13:00 19:00	Daily briefing Warning signal for Championship races Competitors dinner
Thursday, 3 August	09:00 11:00 13:00	Race Office opens Daily briefing Warning signal for Championship races
Friday, 4 August	09:00 11:00 13:00 18:00 (dependent on race finish)	Race Office opens Daily briefing Warning signal for Championship races Prize Giving & Closing Ceremony

The Championship will consist of a **maximum of 16 races**.

The Race Committee intention is that there will be **no more than 4 races each day**. However, additional races may be sailed either in advance or arrears in order to complete the program if weather or other reasons dictate.

In the event that any one fleet reaches an entry of 80 boats or more, then at the discretion of the Race Management team, flights may be used to split the fleet into manageable numbers.

The final day of racing will be 4 August 2017 and any number of races may be sailed.

**No warning signal will be made after 16:00 on 4 August 2017.**

It is likely that all races during a day will be sailed without time to go ashore in between races.

## 5. SAILING INSTRUCTIONS

The Sailing Instructions (SI) will be available at registration and posted on the Official Notice Board (ONB) and may be posted on the event website within 2 weeks of the start of the event.



## 6. RACE AREAS & VENUES

Attachment A shows the location for regatta facilities.

Attachment B shows the approximate location of the Racing Area.

## 7. THE COURSES

The courses to be sailed will be **Trapezoid Courses**.

They will be described in detail in the Sailing Instructions (SI).

## 8. INTERNATIONAL JURY

An International Jury will be appointed in accordance with RRS 91(b).

The International Jury decisions will be final as provided in Rule 70.5.

## 9. PENALTY SYSTEM

RRS Appendix P will apply. RRS P2 will be changed in the sailing instructions by deleting RRS P2.2 and P2.3, and by having RRS P2.1 apply to all penalties.

## 10. SCORING

The Low Point System of Appendix A will apply.

In the event either fleet gains an entry of 80 boats or more, flights may be required, details of which will be included in the Sailing Instructions

### 10.1 Races required to constitute a series

4 races shall be completed to constitute a series.

### 10.2 Races to count for total score

A boat's score shall be calculated in accordance with RRS A2, except:

- (a) When 4 races have been completed, a boat's series score will be the total of her race scores.



- (b) When from 5 to 8 races have been completed, a boat's series score will be the total of her race scores except her worst score.
- (c) When 9 or more races have been completed, a boat's series score will be the total of her race scores except her worst 2 scores.
- (d) When 13 or more races have been completed, a boat's score will be the total of her race scores, except her 3 worst scores.

### 10.3 Calculation of scores

- (a) Points for the Pro and Sport fleets shall be calculated separately.
- (b) Points for the World Championships shall be calculated including all competitors in each fleet.

## 11. SUPPORT BOATS

(a) All support boats must register in advance of the event with the IRSTCA Worlds Secretary **Emma Hawley** at [intsecretary@rstera.org](mailto:intsecretary@rstera.org)

Upon arrival, support boats must report to the event registration desk and register.

They must not launch before they have registered and paid. Their boats must be adequately insured with cover of at least 2,000,000 Euros against third party claims.

**All support boats must show original insurance certificates at registration.**

- (d) Support boats will sign in at the Regatta Office and comply with the support boat regulations as defined in the Sailing Instructions.  
Team leaders, coaches and other support personnel will be required to register at the Regatta Office during the Registration & Measurement days.
- (e) All support boat helms must attend the Supporters Briefing at 11:00 on 31 July and subsequently each morning as per the schedule.





- (f) Support boats shall be controlled within the race area, they will not be free to roam up and down the course during racing, and further details will be included within the sailing instructions.
- (g) All support boats will display their provided registration flag and their National flag from leaving their designated mooring area to their return.
- (h) All support person will be required to comply with RRS 3.

## 12. BOATS AND TRAILER STORAGE

- (a) Boats shall be kept in their assigned places in the dinghy park for the duration of the regatta unless instructed otherwise. Trailers will be kept in a special area designated by OA and will be identified on arrival at venue.
- (b) Information on arrival procedures and practice sailing facilities between will be posted on the event web site.

## 13. RADIO COMMUNICATION / RECORDING EQUIPMENT

Except in an emergency, a boat that is racing shall not make voice or data transmissions and shall not receive voice or data communication that is not available to all boats. (Appendix K notice of race ).  
Boats may carry fixed video recording equipment attached to any part of the boat, provided this equipment is not remotely controlled

## 14. PRIZES

- (a) **RS Tera Pro** as a minimum dependent on number of entries
  - 1st - 6th Overall and 1st - 3rd in Silver fleet if entry numbers dictate
  - 1st - 3rd Ladies
- (b) **RS Tera Sport** as a minimum dependent on number of entries
  - 1st - 6th Overall and 1st - 3rd in Silver fleet if entry numbers dictate
  - 1st - 3rd Ladies



(c) **Titles will be awarded as follows:**

RS Tera Pro World Champion: 1st RS Tera Pro Overall

RS Tera Sport World Champion: 1st RS Tera Sport Overall

**15. DISCLAIMER OF LIABILITY AND INSURANCE**

Competitors participate in the regatta entirely at their own risk. See RRS 4, Decision to Race.

The organizing authority will not accept any liability for material damage or personal injury or death sustained in conjunction with or prior to, during, or after the regatta (Appendix K notice of race).

Sailing is by its nature an unpredictable sport and therefore inherently involves an element of risk. By taking part in the event, each competitor agrees and acknowledges that:

- (a) They are aware of the inherent element of risk involved in the sport and accept responsibility for the exposure of themselves, their crew and their boat to such inherent risk whilst taking part in the event;
- (b) They are responsible for the safety of themselves, their crew, their boat and their property whether afloat or ashore;
- (c) They accept responsibility for any injury, damage or loss to the extent caused by their own actions or omissions;
- (d) Their boat is in good order, equipped to sail in the event and they are fit to participate;
- (e) The provision of a race management team, patrol boats and other officials and volunteers by the event organizer does not relieve them of their own responsibilities;
- (f) The provision of patrol boat cover is limited to such assistance, particularly in extreme weather conditions, as can be practically provided in the circumstances;



- (g) Their boat is adequately insured, with cover of at least 2,000,000 Euros against third party claims.

## 16. RIGHT & COPYRIGHT

In participating in the RS Tera World Championship any competitor automatically grants to the Organizing Authority, the National and International Class Associations permission to make, use and show, from time to time, any motion pictures and live, taped or film television and other reproductions of him/her during the period of the event without compensation.

## 17. FURTHER INFORMATION

For further information regarding the entry process, please contact:

**IRSTCA Worlds Secretary – Emma Hawley**

email: [intsecretary@rstera.org](mailto:intsecretary@rstera.org)

website: [www.rstera.org](http://www.rstera.org)

**Organising Authority:**

**Yacht Club de Carnac**

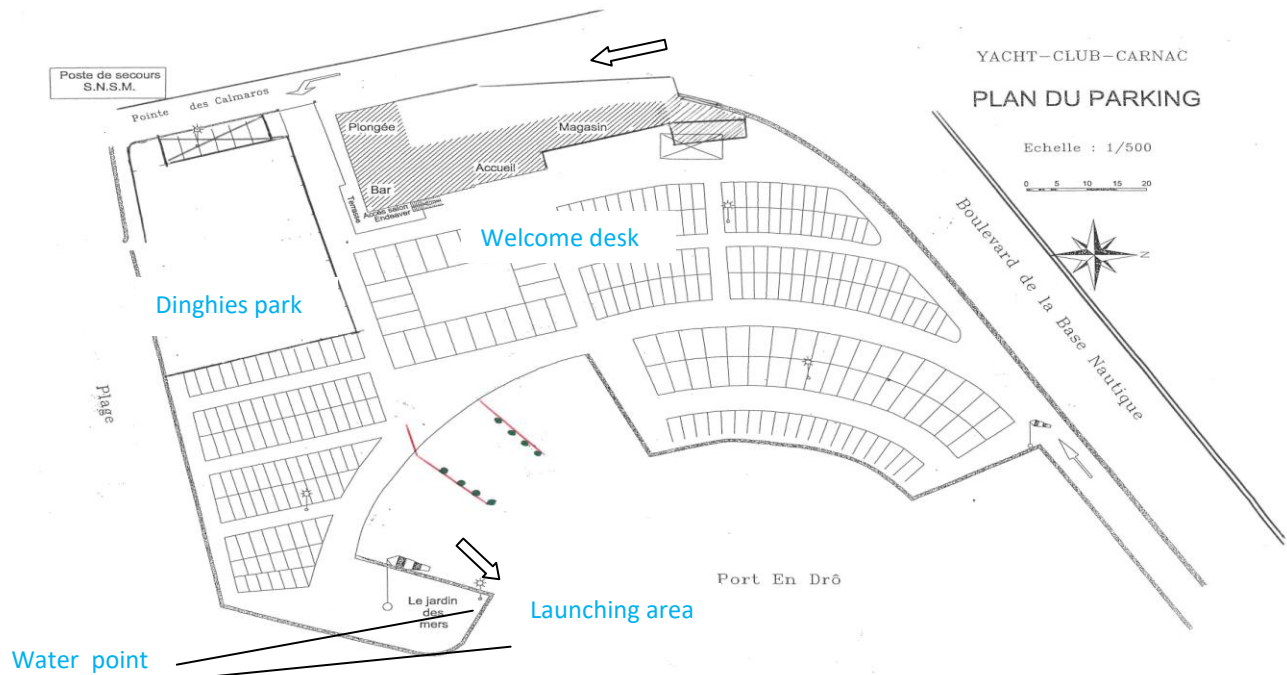
Address: Port En Dro,  
BP30  
56341 Carnac  
France

Phone: + 33 (0)297 52 10 98  
email: [Eurocat@yccarnac.com](mailto:Eurocat@yccarnac.com)  
website: [www.yccarnac.com](http://www.yccarnac.com)



**ATTACHMENT A**

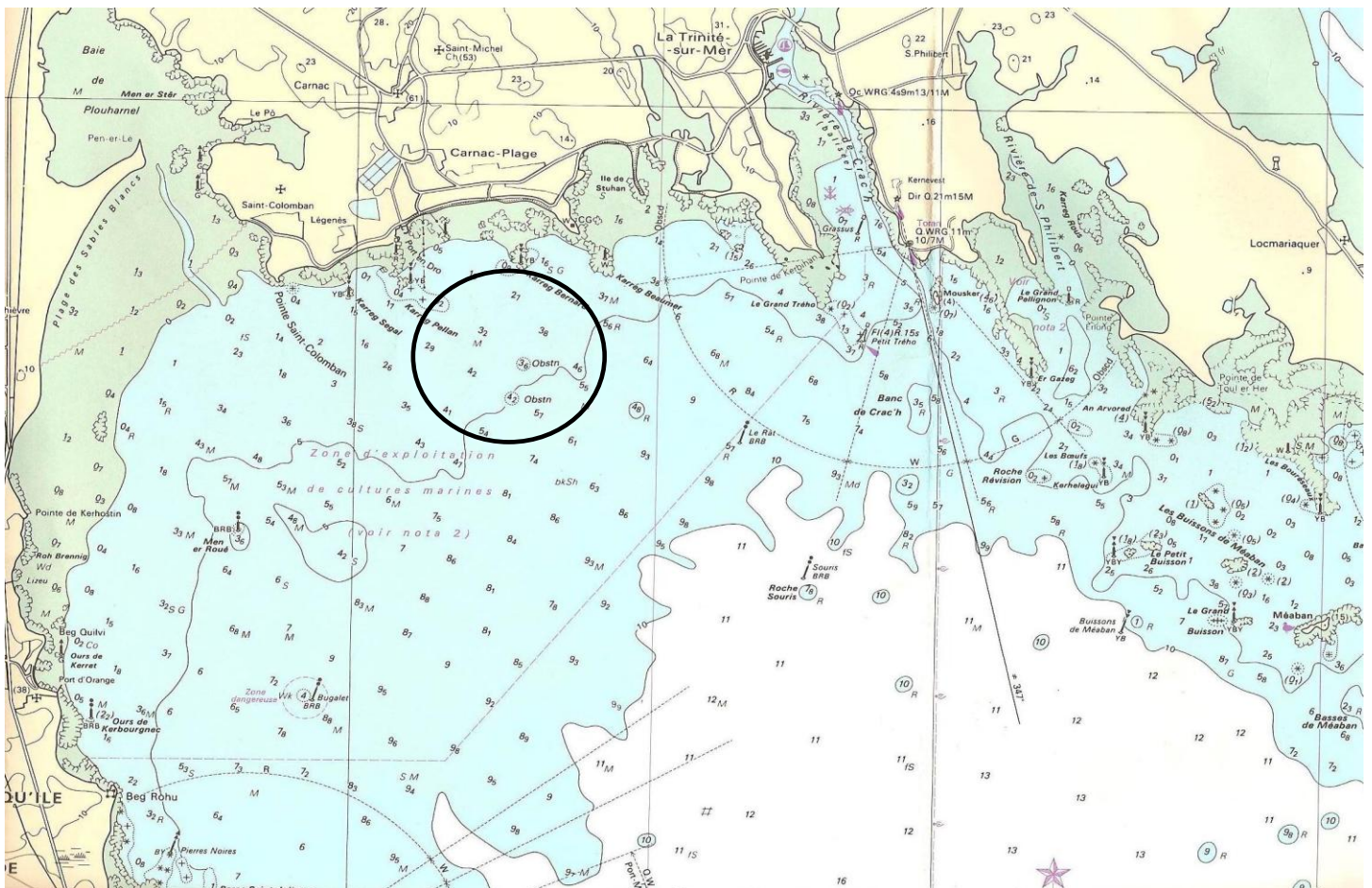
**LOCATION OF THE REGATTA FACILITIES**





**ATTACHMENT B**

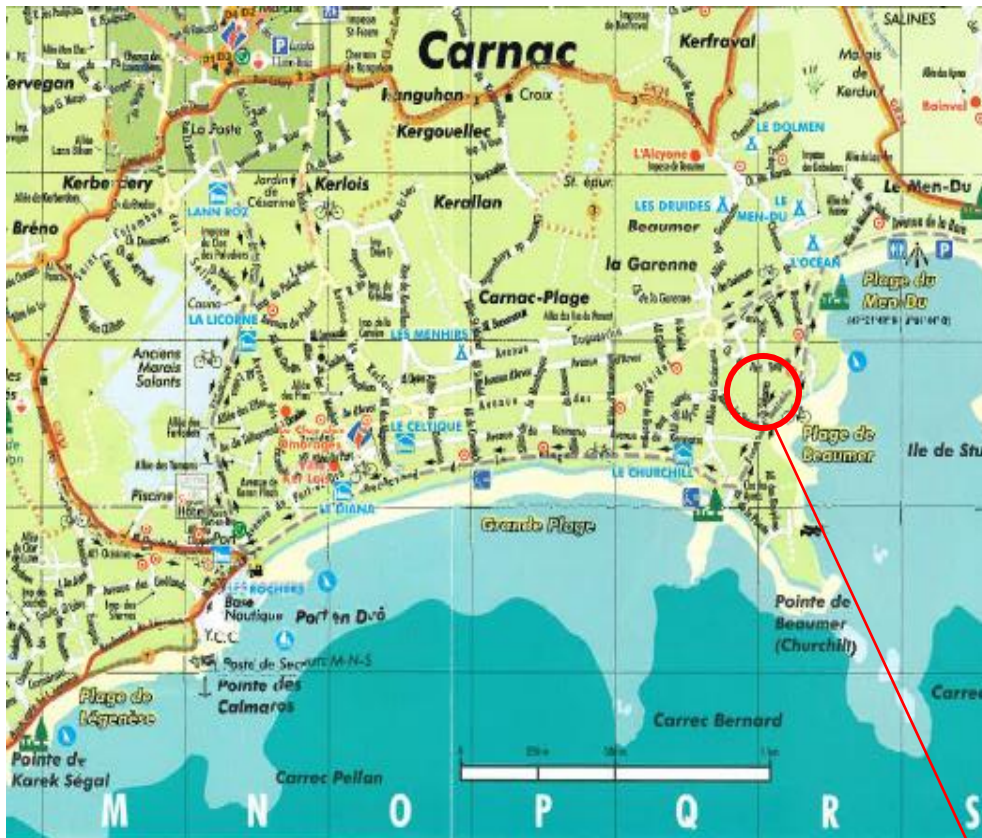
**APPROXIMATE LOCATION OF THE RACING AREA**





## ATTACHMENT C

### LOCATION OF THE TRAILERS PARK



Trailers park